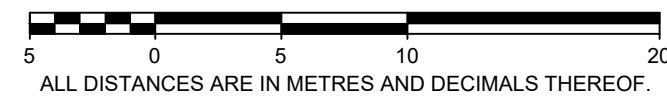
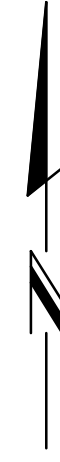


**REFERENCE PLAN OF TO ACCOMPANY BYLAW NO 12529 (CITY OF KELOWNA)  
TO CLOSE PART OF ROAD DEDICATED ON PLAN 896 SECTION 29 TOWNSHIP 26  
OSOYOOS DIVISION YALE DISTRICT**

PURSUANT TO SECTION 120 OF THE LAND TITLE ACT AND SECTION 40 OF THE COMMUNITY CHARTER.  
CITY OF KELOWNA  
BCGS 82E.093



THE INTENDED PLOT SIZE OF THIS PLAN IS 864mm IN WIDTH BY 560mm IN HEIGHT (D SIZE) WHEN PLOTTED AT A SCALE OF 1:300



DATUM: NAD83 (CSRS) 4.0.0.BC.1, UTM ZONE 11.			
STATION	NORTHING	EASTING	ABSOLUTE ACCURACY
75H2832	5530449.185	323481.027	0.01
73H1752	5530468.025	323620.435	0.01
73H1753	5530543.959	323760.595	0.01
73H1781	5530371.519	324107.716	0.01

NOTE: FOR MAPPING PURPOSES ONLY.

THE UTM COORDINATES AND ESTIMATED ABSOLUTE ACCURACY ACHIEVED ARE DERIVED FROM THE MASCOT PUBLISHED COORDINATES AND STANDARD DEVIATIONS FOR GEODETIC CONTROL MONUMENTS 75H2832, 73H1752, 73H1753 AND 73H1781.

**LEGEND**

THIS PLAN LIES WITHIN INTEGRATED SURVEY AREA NUMBER 4, CITY OF KELOWNA, NAD83 (CSRS) 4.0.0.BC.1, UTM ZONE 11.

GRID BEARINGS ARE DERIVED FROM OBSERVATIONS BETWEEN GEODETIC CONTROL MONUMENTS 75H2832 AND 73H1781 AND ARE REFERRED TO CENTRAL MERIDIAN OF UTM ZONE 11.

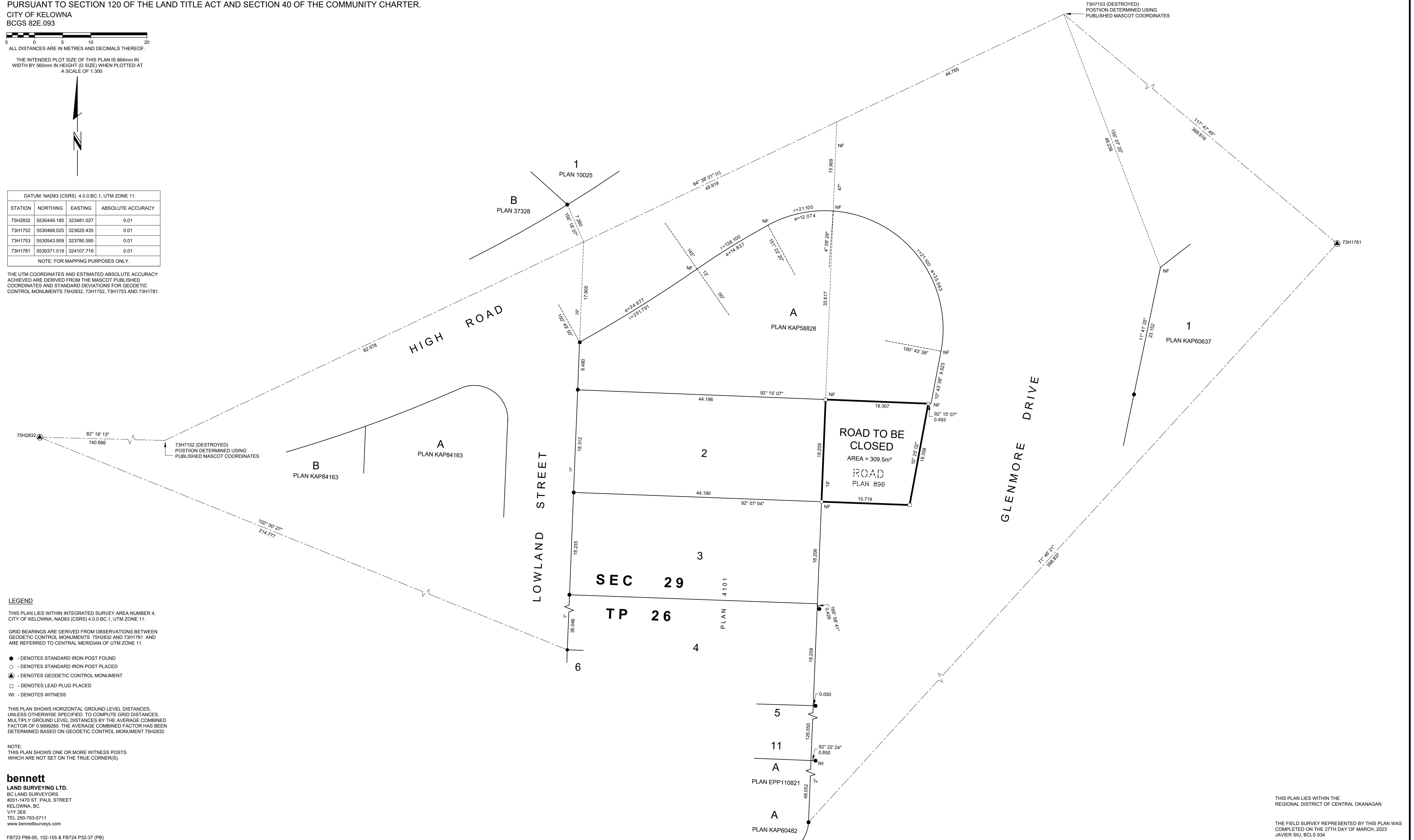
- - DENOTES STANDARD IRON POST FOUND
- - DENOTES STANDARD IRON POST PLACED
- ⊙ - DENOTES GEODETIC CONTROL MONUMENT
- - DENOTES LEAD PLUG PLACED
- Wt - DENOTES WITNESS

THIS PLAN SHOWS HORIZONTAL GROUND LEVEL DISTANCES, UNLESS OTHERWISE SPECIFIED, TO COMPUTE GRID DISTANCES. MULTIPLY GROUND LEVEL DISTANCES BY THE AVERAGE COMBINED FACTOR OF 0.9999260. THE AVERAGE COMBINED FACTOR HAS BEEN DETERMINED BASED ON GEODETIC CONTROL MONUMENT 75H2832.

NOTE:  
THIS PLAN SHOWS ONE OR MORE WITNESS POSTS WHICH ARE NOT SET ON THE TRUE CORNER(S).

**bennett**  
LAND SURVEYING LTD.  
BC LAND SURVEYORS  
#201-1470 ST. PAUL STREET  
KELOWNA, BC  
V1Y 2E8  
TEL 250-763-5711  
www.bennettsurveys.com

FB723 P88-95, 152-155 & FB724 P32-37 (PB)



THIS PLAN LIES WITHIN THE REGIONAL DISTRICT OF CENTRAL OKANAGAN

THE FIELD SURVEY REPRESENTED BY THIS PLAN WAS COMPLETED ON THE 27TH DAY OF MARCH, 2023  
JAVIER SIU, BCLS 934

